

7A/70 Alfred Street MILSONS POINT NSW

2 2 1

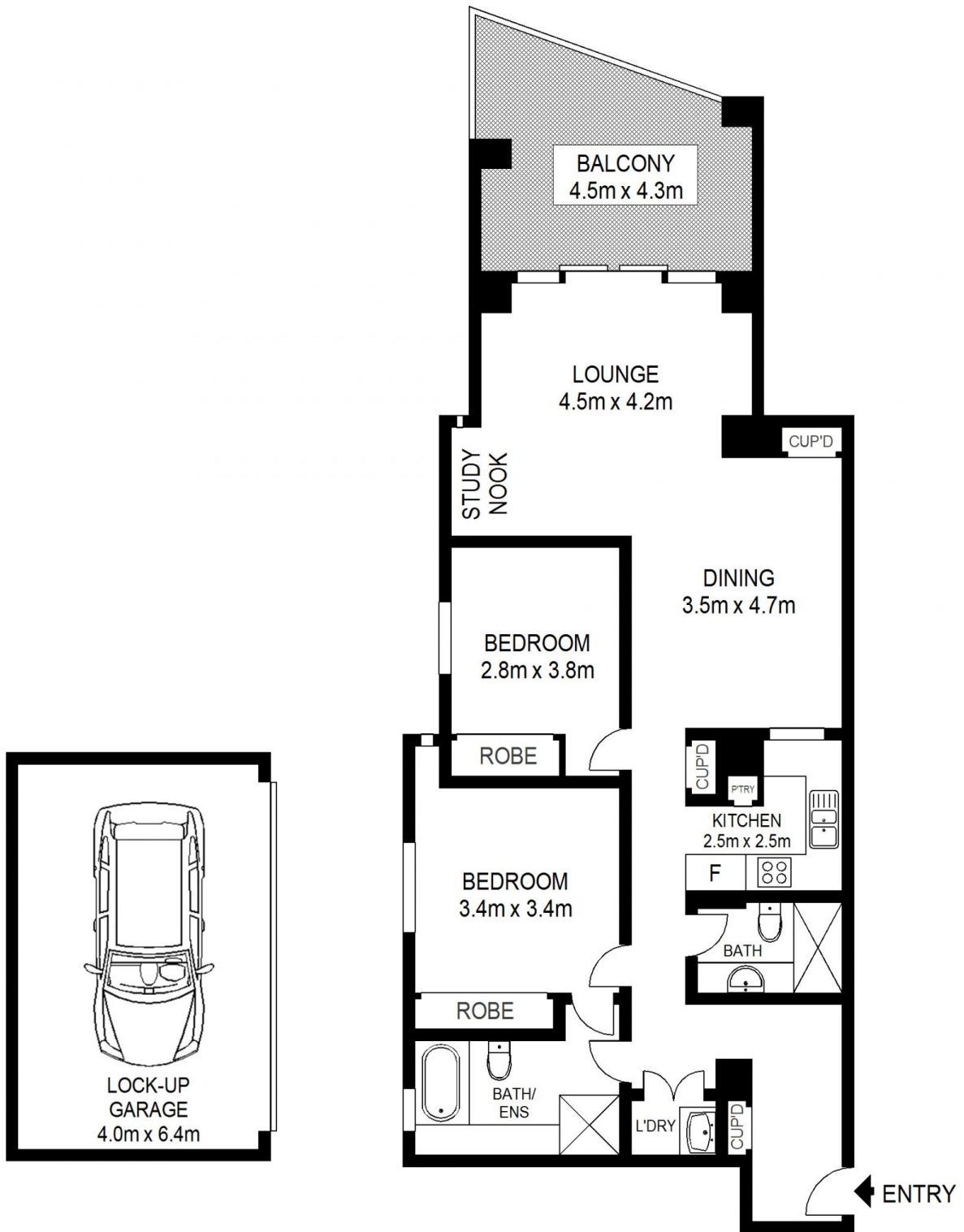
Sold pre-auction please contact Abhi Sharma for more details.

Set within the tightly held Grandview Apartments complex, this stunning elevated ground floor apartment offers sophisticated living with separately zoned lounge and dining areas flowing out to a generous balcony with glimpses of Lavender Bay and views to Anzac Bridge.

With only one common wall, the two-bedroom apartment (110sqm approx) boasts a coveted corner position, with access to luxury resort style facilities. Ideally located, this exclusive complex is a short walk to trendy Kirribilli Village cafes and shops, Milsons Point Station and foreshore parkland.

View : <https://www.milsonre.com/sale/nsw/north-shore-lower/milsons-point/residential/apartment/5930597>

Two bedrooms with built-ins, master with bathroom access



Scale shown in metres. All dimensions herein are approximate and gathered from sources believed to be reliable. Whilst every effort is made for the accuracy of our floor plans, interested parties should rely on their own enquiries. Floor Plans by Industrie Media | industriemedia.tv

7A/70 Alfred Street, Milsons Point