

26A Alfred Street MILSONS POINT NSW

3 4 1

SOLD! Call Chris Bell for an appraisal of your property today!

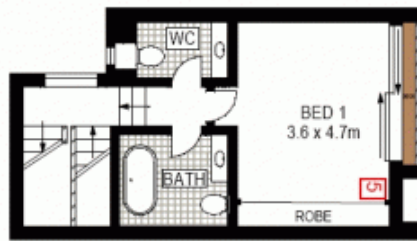
Historic terrace beautifully transformed into a sophisticated contemporary residence. Mixed use zoning makes this property equally appealing as a grand residence, boutique shop, office or professional practice. Both cleverly combine traditional details with superior modern finishes to set a new benchmark for designer living in a key harbourside address. Views across Bradfield Park, through to Kirribilli and East over the Harbour simply add to the overall appeal of this creative design by award winning architect Andrew Cortese.

- Generous interiors with formal and casual living spaces
- High ornate ceilings, marble fireplaces and polished floors
- Double sized bedrooms each with luxury en-suite facilities

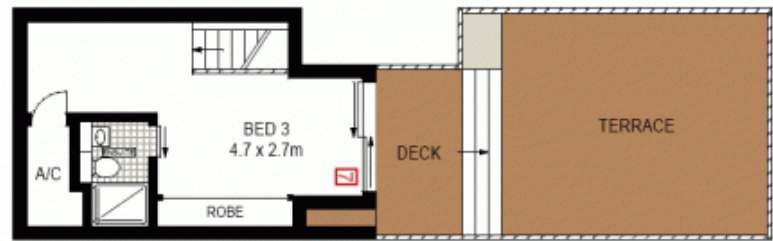
Building Size : 32 sqm
View : <https://www.milsonre.com/sale/nsw/north-shore-lower/milsons-point/residential/terrace/5930600>



Chris Bell
 02 9007 5300



UPPER GROUND LEVEL



LOFT LEVEL



LEVEL ONE



GROUND LEVEL



Scale in metres. Indicative only. Dimensions are approximate. All information contained herein is gathered from sources we believe to be reliable. However we cannot guarantee its accuracy and interested persons should rely on their own enquiries.



26a Alfred Street, Milsons Point