



6/6 Cliff Street MILSONS POINT NSW

3 3 2

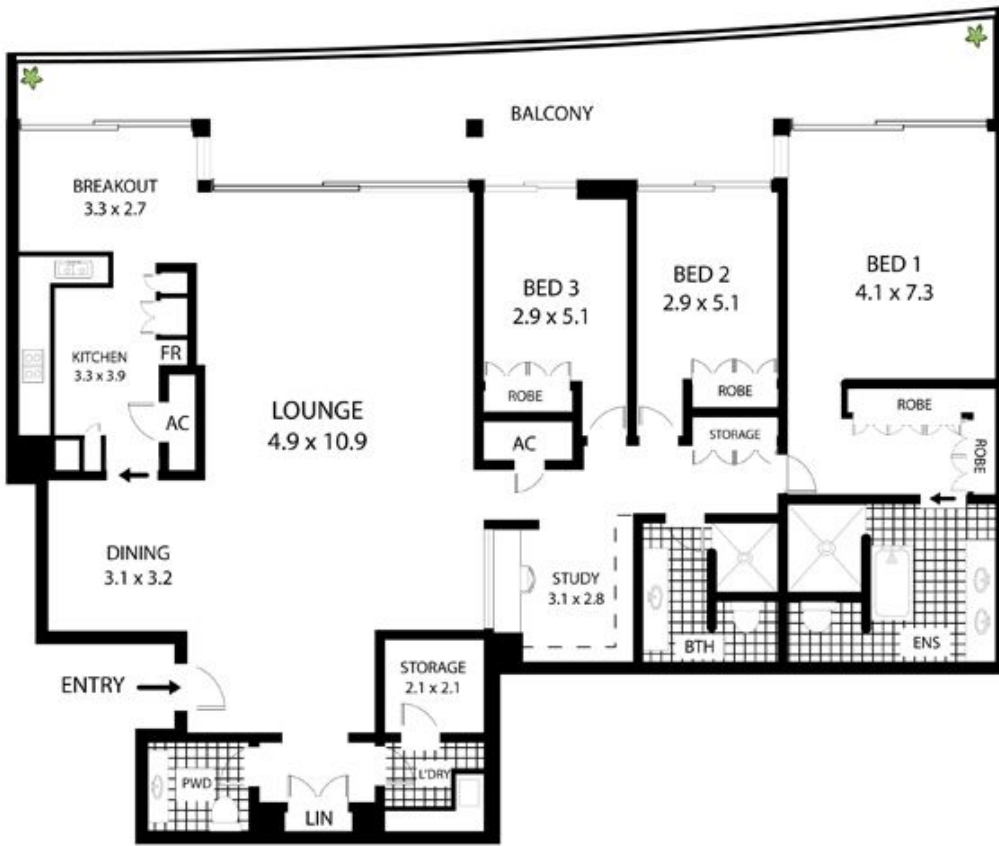
Set within 'The Cavill' complex, this tightly-held and highly desirable Mirvac built home provides easy care world class living from a bayside viewpoint.

- Peaceful water views from all bedrooms, kitchen, and living room
- Quality marble bathrooms and powder room
- Full length entertainers balcony
- Miele gas kitchen with ample storage, bench space and casual eatery
- Functional configuration with generous proportions throughout
- Large home office/ study
- 4 SQM internal storage
- 2 Secure car spaces with bay views
- Ducted air conditioning, video intercom, alarm
- Easy walk to parks, restaurants and all forms of public

Building Size : 27 sqm
View : <https://www.milsonre.com/sale/nsw/north-shore-lower/milsons-point/residential/apartment/5930602>



Chris Bell
02 9007 5300



DOUBLE
SECURE
CAR SPACES

6/6 Cliff St Milsons Point

All measurements are approximate only. Plan is provided as an indication of layout

