



801/20 Alfred Street MILSONS POINT NSW

4 🚗 4 🚗 6 🚗

EXCITING & UNIQUE OPPORTUNITY HARBOUR FRONT PENTHOUSE UNRIVALLED QUALITY

Exclusively positioned, this iconic four bedroom home lavishly occupies two roof-top levels within award winning The Point apartments, commanding unprecedented views from this ultimate Sydney harbour side location.

This is a rare opportunity to purchase a world class masterpiece of modern design, with a meticulous attention to quality and detail.

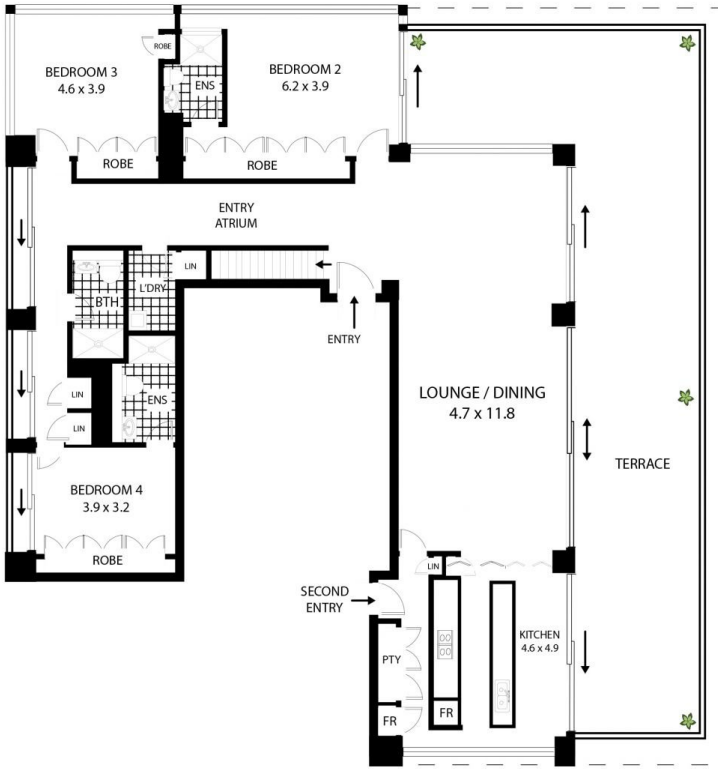
Generously offering 548 SQM on title, comprising of 315 internal living and 197 outdoor living square metres, plus security car parking for up to six vehicles or storage.

Footsteps from Sydney Harbour, Sydney Harbour Bridge, Bradfield Park, Lavender Bay and North Sydney Olympic

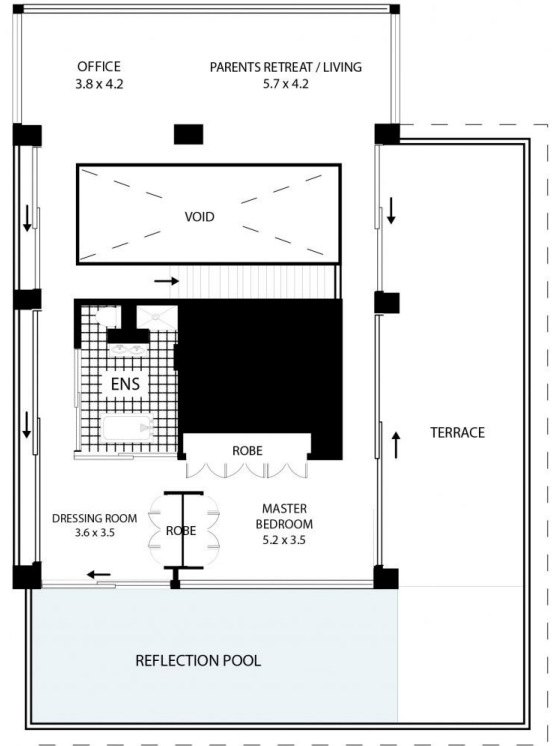
Price : \$ 7,500,000
Building Size : 548 sqm
View : <https://www.milsonre.com/sale/nsw/north-shore-lower/milsons-point/residential/apartment/5930611>



Chris Bell
02 9007 5300



ENTRY LEVEL



UPPER LEVEL

801/20 Alfred Street Milsons Point

All measurements are approximate only. Plan is provided as an indication of layout



NOTE:
2 x SECURE CAR SPACES
PLUS
2 x DOUBLE CAR STACKER