



99/48 Alfred Street MILSONS POINT NSW

1 1 1

Highest 1 bedroom sale in the area - Contact Chris Bell to discuss your property.

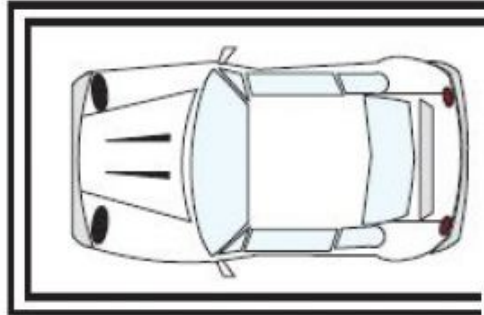
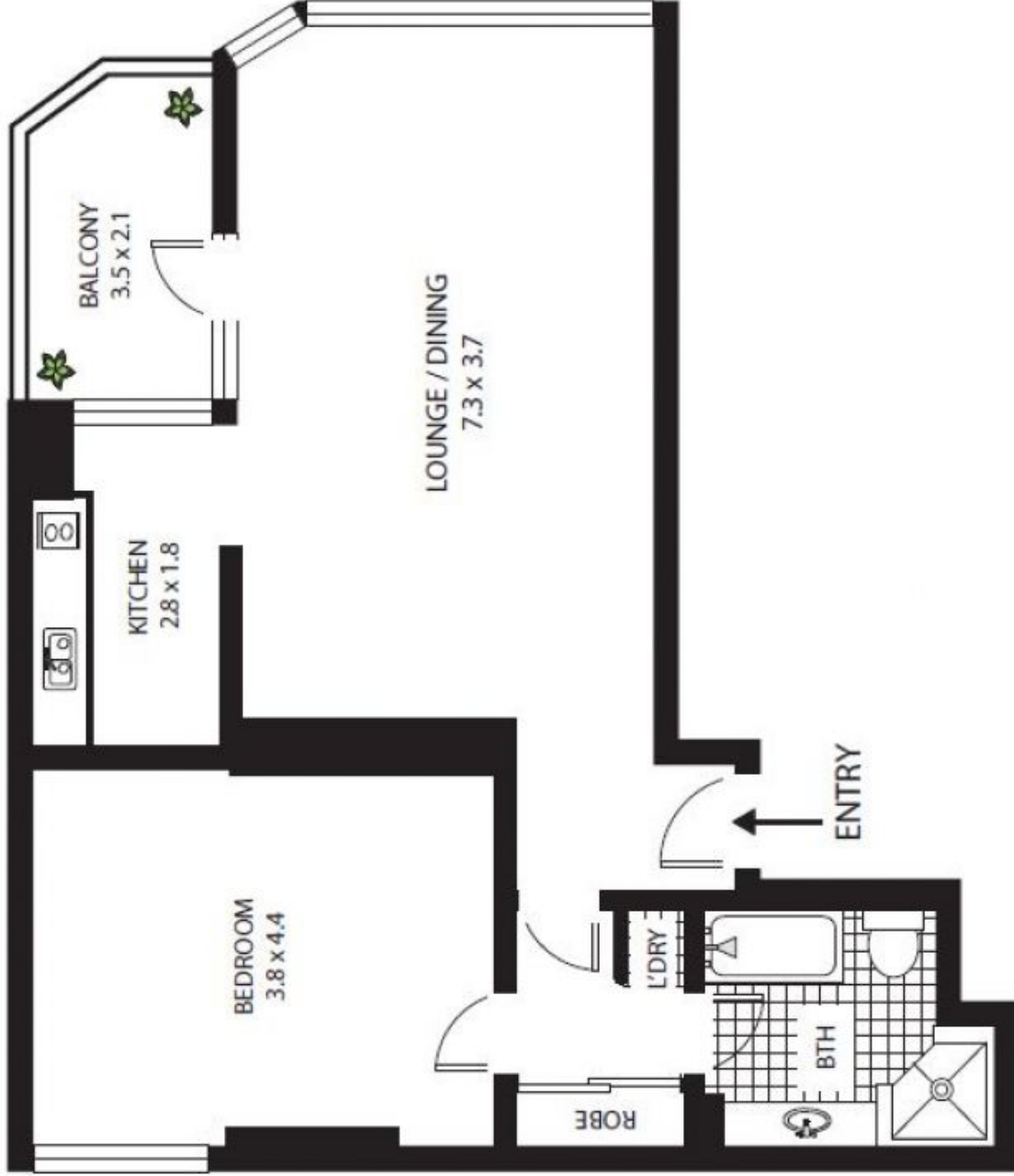
Find yourself admiring the harbour whilst drinking your morning tea. This remarkable 9th level corner apartment soothes the soul as well as any investment hunger. Located in the popular building The Milson this apartment offers a generous layout of an open plan living and dining area with large panoramic windows. The large kitchenette is nestled next to the balcony with views of Lavender Bay. The extra-large bedroom offers an easterly aspect with a view over Kirribilli. The wardrobe leads to the original marble tiled bathroom with large bath tub and separate shower.

The apartment measures 74m² internally, offers a separate storage room on the same level, as well as an extra-large car space of 24m².

Building Size : 74 sqm
Land Size : 100 sqm
View : <https://www.milsonre.com/sale/nsw/north-shore-lower/milsons-point/residential/apartment/5930614>

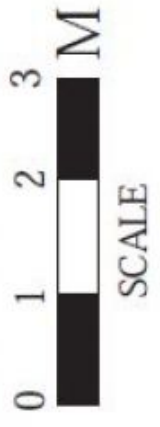


Chris Bell
02 9007 5300



SINGLE SECURE
CARSPACE

NOTE: STORAGE CAGE ON TITLE



99/48 Alfred St Milsons Point

All measurements are approximate only. Plan is provided as an indication of layout