

4/14 Kurraba Road Neutral Bay NSW

3  2  2 

Note: Driving access via Alfred Street North

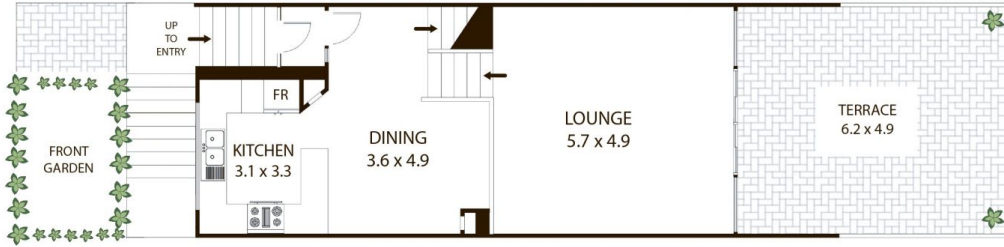
IMPORTANT

Face Covering Required; No Entry Permitted Without Wearing A Face Mask / Cloth Covering at the request of the occupant*

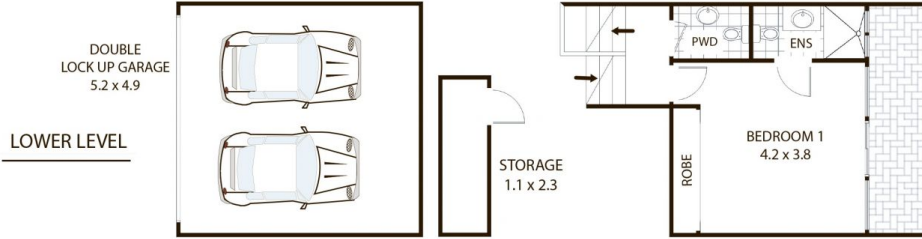
View : <https://www.milsonre.com/lease/nsw/north-shore-lower/neutral-bay/residential/townhouse/5996767>

Peacefully positioned in a quiet and leafy setting, this private 238SQM tri-level townhouse offers ultimate family convenience. A sought after family location, surrounded by some of Sydney's most prestige private, public and selective schools. Located only moments from the picturesque Anderson Park, Hayes Street Wharf and increasing amenities of North Sydney CBD.

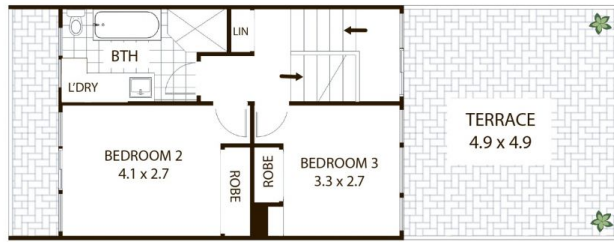
- Spacious open plan living areas with timber floors
- Sunfilled entertaining courtyard off lounge room



ENTRY LEVEL



MID LEVEL



UPPER LEVEL

4/14 Kurraba Rd Neutral Bay

All measurements are approximate only. Plan is provided as an indication of layout

