



901/93 Pacific Highway North Sydney NSW

1 1 1

HEART OF NORTH SYDNEY, ONE ROOM AND STUDY

This 9th floor apartment in the heart of North Sydney reveals magnificent views of the city including the iconic Harbour Bridge. A fabulous lifestyle pad, it is only footsteps from cosmopolitan eateries, lifestyle amenities and Greenwood Plaza.

Perfect for -Tuesday- Wednesday-Thursday workers

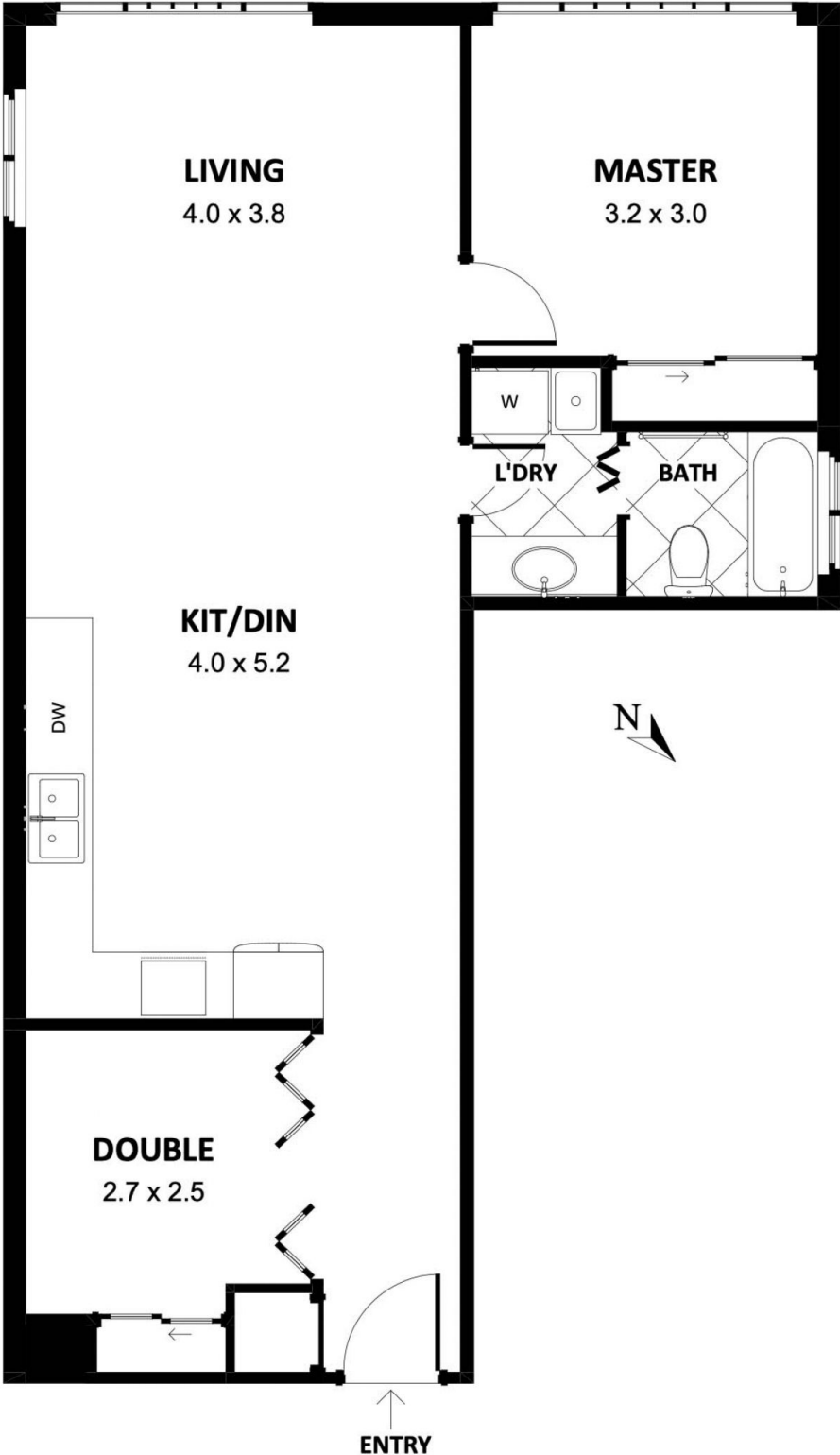
- Impressive Sydney and North Sydney CBD views
- Centrally located to lifestyle amenities whilst fringing arterial transport
- Open-plan living enjoying large windows
- Second media room/ guest room or study
- Bathroom with granite vanitytop plus shower/bath
- Approx 65sqm + security building, lift and intercom
- Car Space is a Car Stacker
- Ufurnished

View : <https://www.milsonre.com/lease/nsw/north-shore-lower/north-sydney/residential/apartment/6557027>



Adam Rakowski
02 9007 5300

***Total internal area approx. 65 m²**



UNIT 901, 93-95 Pacific Highway, North Sydney, 2060 NSW