



41/48 Alfred Street Milsons Point NSW

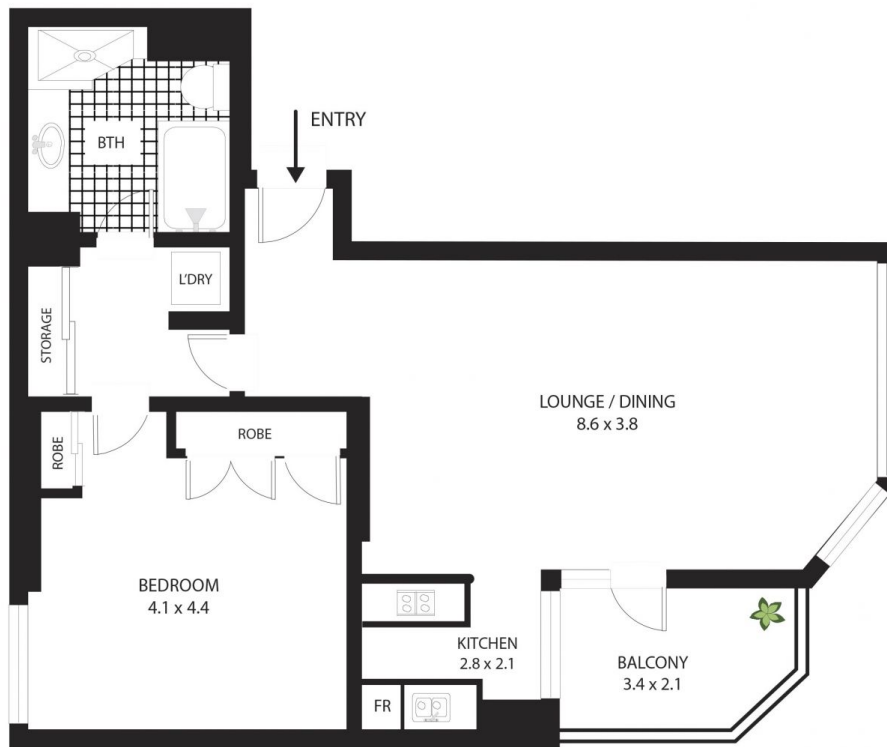
1 1 1

Bayside One Bedroom Apartment with Views, Parking & Storage!

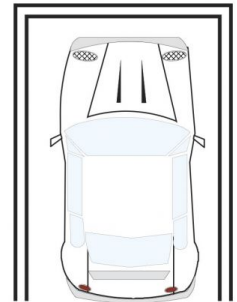
Lavender Bay at its finest, this spacious 75 SQM residence proudly embraces its corner position within the sought after Milson complex. With an east facing bedroom and living areas enjoying the north and westerly aspects, year-round natural light offers convenience like no other.

- 75 SQM plus car parking and convenient storage room (not cage)
- Oversized bedroom with built in robes
- Brand new Modern fully equipped kitchen and European appliances
- Outstanding new renovation
- Ducted air conditioning, security building, intercom
- Well maintained complex with pool and gym

View : <https://www.milsonre.com/lease/nsw/north-shore-lower/milsons-point/residential/apartment/6877415>



STORAGE
(private lock up on floor storage)



SINGLE SECURE CAR SPACE

41/48 Alfred St, Milsons Point

All measurements are approximate only. Plan is provided as an indication of layout

