



### 32/48 Alfred Street Milsons Point NSW

1 1 1

#### Tranquil Studio with Views and Parking

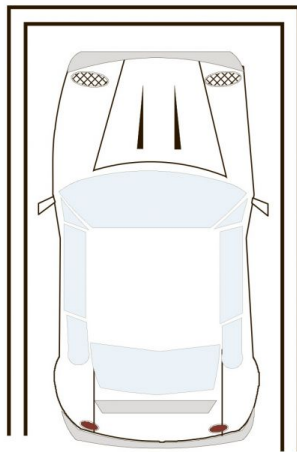
Ideally located for peaceful convenience, this tranquil studio apartment provides the ultimate lifestyle for the city executive or commuter seeking a city crash-pad. Offering quality views of the Bridge and Lavender Bay from a well-proportioned balcony, this entry-level home ticks all the boxes from within a well maintained security complex.

- Secure car parking with level lift access
- Light-filled balcony enjoying water and bridge views
- Ducted air conditioning (heating & cooling)
- Security Building with Heated Pool and Gym
- Unfurnished

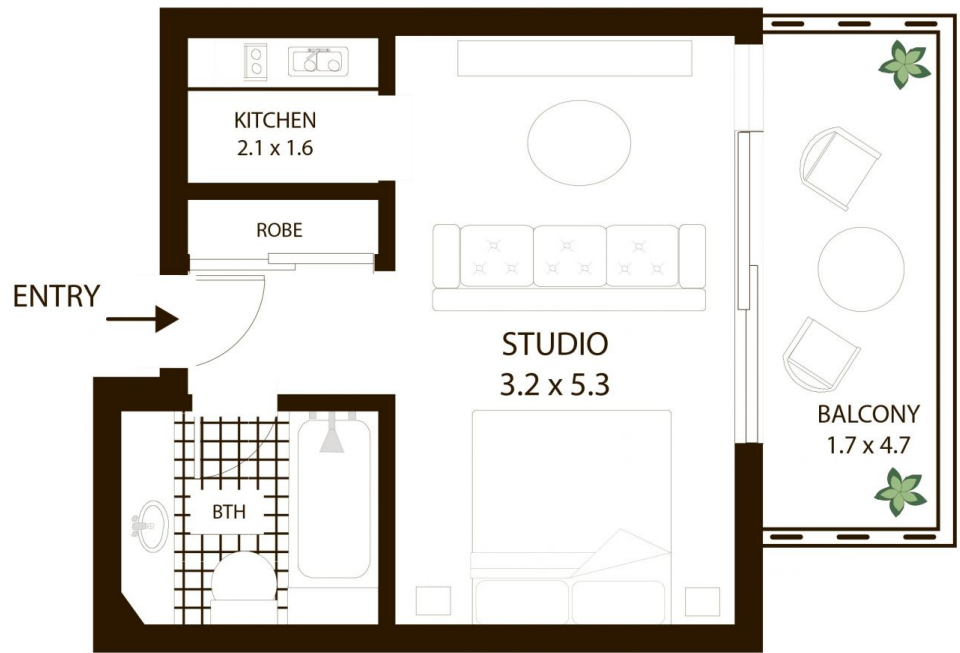
**View :** <https://www.milsonre.com/lease/nsw/north-shore-lower/milsons-point/residential/apartment/7012793>



**Agnes David**  
02 9007 5300

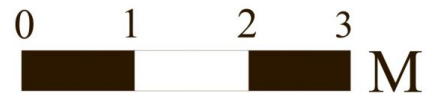


SINGLE  
SECURE CAR SPACE



## 32/48 Alfred St Milsons Point

All measurements are approximate only. Plan is provided as an indication of layout



SCALE