



10/94-96 Alfred Street Milsons Point NSW

2 1 1

Spacious 2 Bedroom Apartment In the Heart Of Milsons Point

This luxurious executive apartment is perfectly located opposite Milsons Point station offering the most convenient transport to Sydney CBD, or a stroll across the harbour bridge from your doorstep. Kirribilli cafe's, shops, restaurants, Lavender Bay parks are also just moments away.

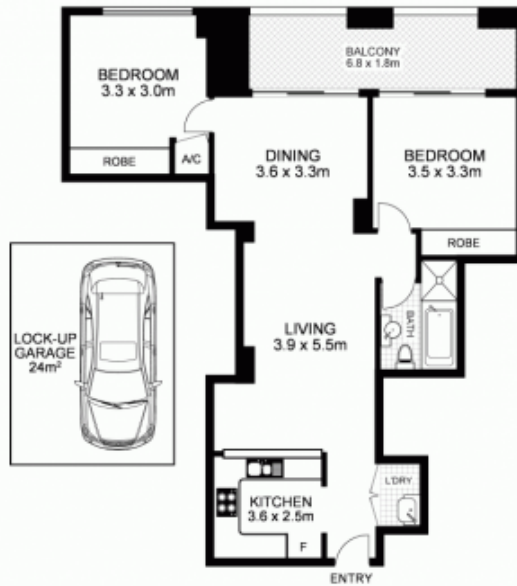
Features include:

- * 2 double bedrooms both with built-ins
- * Large lock up garage
- * Spacious lounge with separate dining area
- * Entertainers sized balcony accessed from lounge & master bedroom

View : <https://www.milsonre.com/lease/nsw/north-shore-lower/milsons-point/residential/apartment/7097742>



Agnes David
02 9007 5300



10/94-98 Alfred Street, MILSONS POINT

Disclaimer: This floor plan is intended as a guide only. Layout dimensions are approximate only. No representations or warranties of any nature whatsoever are given or intended. Any individuals using this information should always rely on their own enquiries.
www.elysiumliving.com.au