



508/140 Military Road Neutral Bay NSW

2 1 1

(Access via Grosvenor Lane)

Perched on the top floor of a modern low-rise block with a quiet sun-filled Northerly aspect, this sleek 2 bedroom apartment offers an incredible lifestyle opportunity in the heart of Neutral Bay. Surrounded by an impressive selection of quality restaurants, bars and cafe's, with transport and shopping conveniences all at your doorstep.

- Sunny North-facing balcony (away from main road)
- 73sqm plus parking and storage (88sqm on title)
- Two generous bedrooms with BIR's
- Quality kitchen with stone benchtops, integrated Miele appliances & gas cooktop
- Ducted AC throughout
- Secure underground car parking space (access via rear lane) & storage
- Modern security complex with lift access

Price : \$ 1,200,000

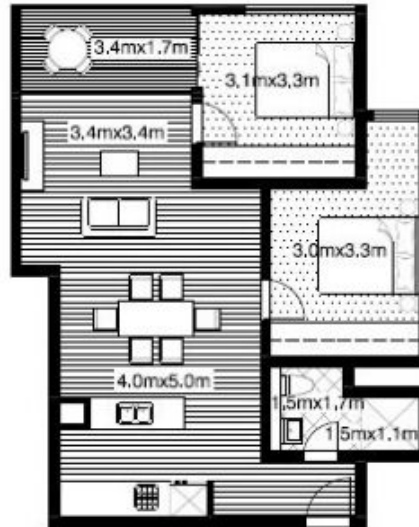
View : <https://www.milsonre.com/sale/nsw/north-shore-lower/neutral-bay/residential/apartment/7180402>



Chris Bell
02 9007 5300



Phil Bell
02 9007 5300



Internal Area: Approx. 65m²
External Area: Approx. 7m²
Total Area: Approx. 72m²

508/140 Military Road, Neutral Bay NSW 2089

Disclaimer:

This plan is presented in good faith and is to be used as a guide. It does not constitute an offer or contract. All area sizes indicated are approximate only. Positions of furniture, fittings and the like are not indicative of final positioning.