



111/245 Pacific Highway North Sydney NSW

2 🛏 1 🚿 1 🚗

Privately positioned within the 'Montrose' residences, this light-filled modern two bedroom apartment offers a highly sought after combination of comfort and convenience. Enjoy a generous floorplan providing open plan living, with separate living/dining zones, and a covered all-seasons balcony.

Price : \$ 1,030,000

View : <https://www.milsonre.com/sale/nsw/north-shore-lower/north-sydney/residential/apartment/7304025>

Experience the ultimate in urban living, positioned just footsteps to multiple transport links, and an array of local shops, bars and restaurants. The ideal first home, lock up city residence, or low-maintenance investment.

- Generous open plan living including separate dining zone with an abundance of storage and space to work from home

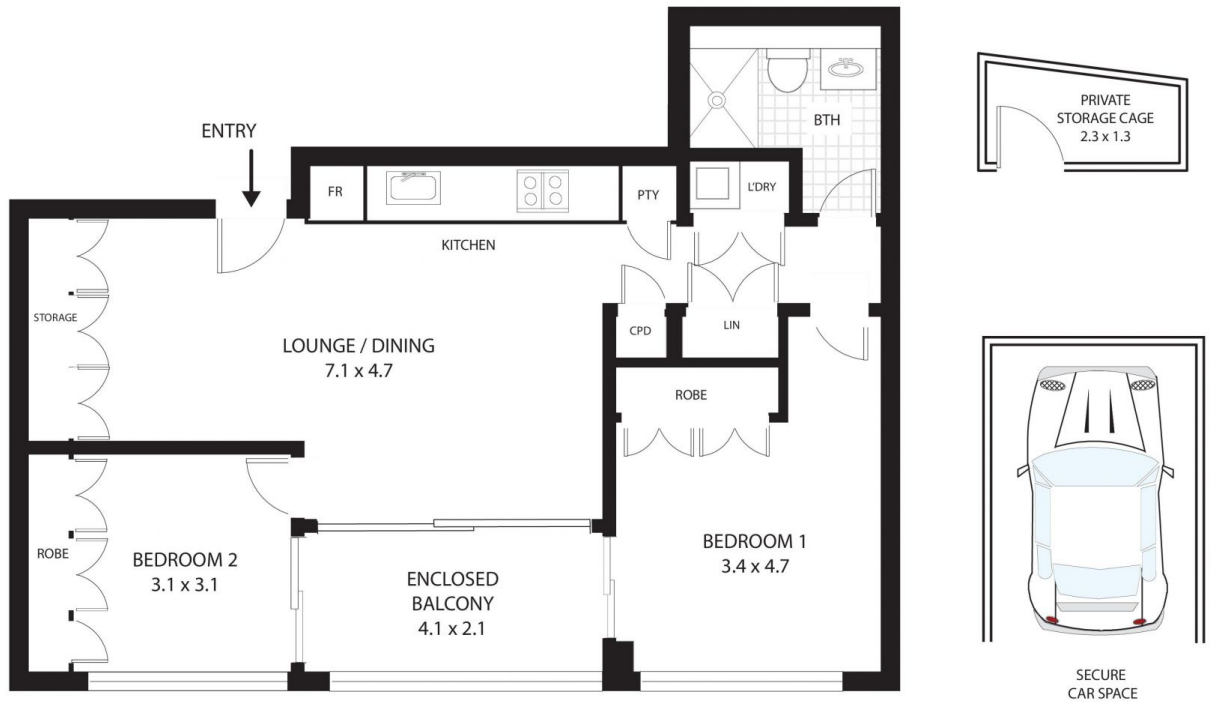
- Two generous bedrooms with built-in robes, and balcony access



Phil Bell
02 9007 5300



Chris Bell
02 9007 5300



111/245 Pacific Hwy, North Sydney

All measurements are approximate only. Plan is provided as an indication of layout

