



**111/245 Pacific Highway North Sydney NSW**

2 🛏 1 🚿 1 🚗

Light-filled modern two bedroom apartment in the highly sought after Montrose complex, offering a highly sought after combination of comfort and convenience. Enjoy a generous floorplan with open plan living, separate living/dining zones, and a covered all-seasons balcony. Positioned just footsteps to multiple transport links, and an array of local shops, bars and restaurants.

**View :** <https://www.milsonre.com/lease/nsw/north-shore-lower/north-sydney/residential/apartment/7364768>

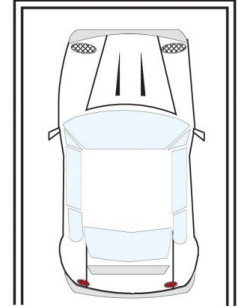
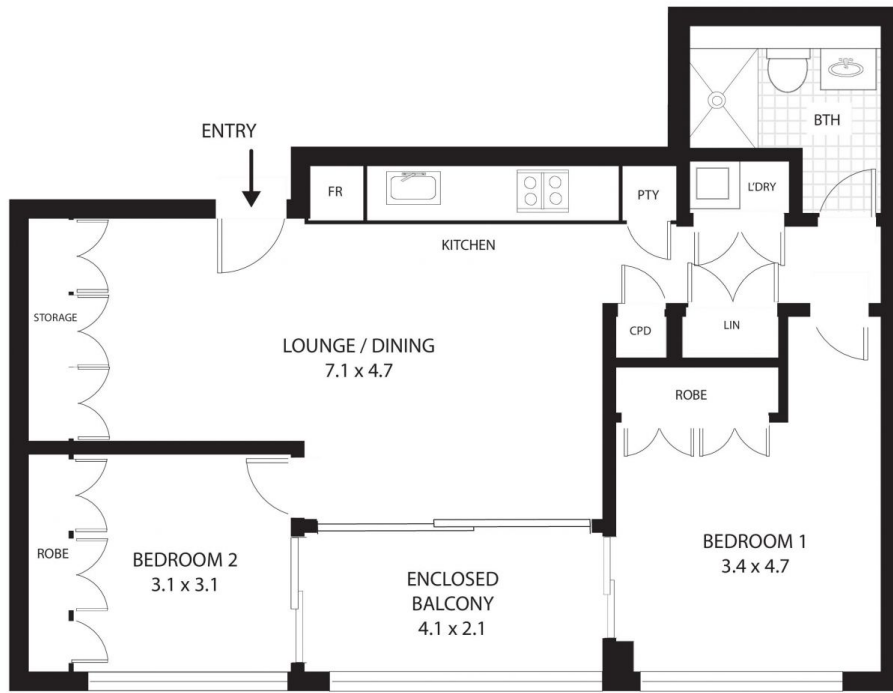
- Generous open plan living including separate dining zone with an abundance of storage and space to work from home
- Two generous bedrooms with built-in robes, and balcony access
- Modern kitchen with stone benchtop, gas cooking and dishwasher
- Sleek designer bathroom plus internal laundry
- Air Con and security intercom



**Phil Bell**  
02 9007 5300



**Kurt Malouf**  
02 9007 5300



SECURE CAR SPACE

111/245 Pacific Hwy, North Sydney

All measurements are approximate only. Plan is provided as an indication of layout

