



22 Alfred Street Milsons Point NSW

3 3 1

Collect your new keys and arrive home into a sophisticated and contemporary Alfred Street residence. Extensively renovated, as part of The Point development, this property now combines traditional details with superior finishes to set a new standard for terrace living.

Price : \$ 3,800,000

View : <https://www.milsonre.com/sale/nsw/north-shore-lower/milsons-point/residential/terrace/7425773>

This Harbourside address, located opposite the relaxing atmosphere of Bradfield Park features high ornate ceilings, marble fireplaces, and polished timber floors. A new kitchen is complete with Corian Island, Miele cooking appliances, and dual built-in fridge/ freezer. Rear lane access to single lock-up garage, ducted air conditioning and C-Bus functionality also add to the features of this amazing property.

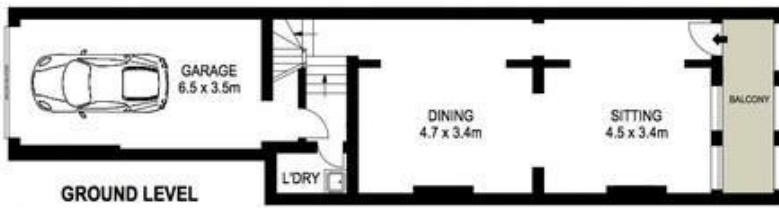
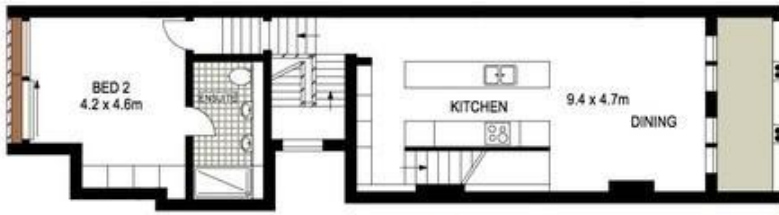


Chris Bell
02 9007 5300



Paul Morris
02 9007 5300

Design by award winning architect Andrew Cortese.



Scale in metres, indicative only. Dimensions are approximate. All information contained herein is gathered from sources we believe to be reliable. However we cannot guarantee its accuracy and interested persons should rely on their own enquiries.



22 Alfred Street, Milsons Point