



32/48 Alfred Street Milsons Point NSW

1 1

Nestled within the prestigious enclave of Milsons Point, 32/48 Alfred Street epitomizes sophisticated urban living. This executive residence offers a seamless fusion of opulence and contemporary design, showcasing picturesque vistas of Sydney's iconic harbour to one side and Lavender Bay to the other. Boasting convenient living spaces and generous balcony, this prime address caters to the most discerning buyers.

Positioned in close proximity to upscale amenities and effortless transportation, this opportunity redefines executive living by seamlessly blending exclusivity, convenience, and timeless elegance.

- Secure car parking with level lift access
- Brand new kitchen, flooring and fixtures
- Light-filled balcony enjoying water and bridge views
- Ducted air conditioning (heating & cooling)

Price : AUCTION

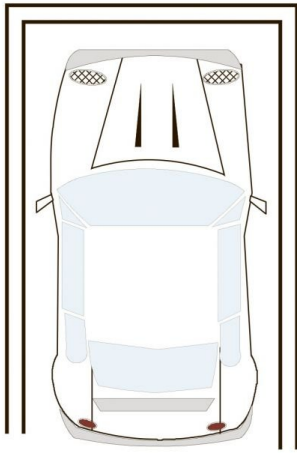
View : <https://www.milsonre.com/sale/nsw/north-shore-lower/milsons-point/residential/studio/7702718>



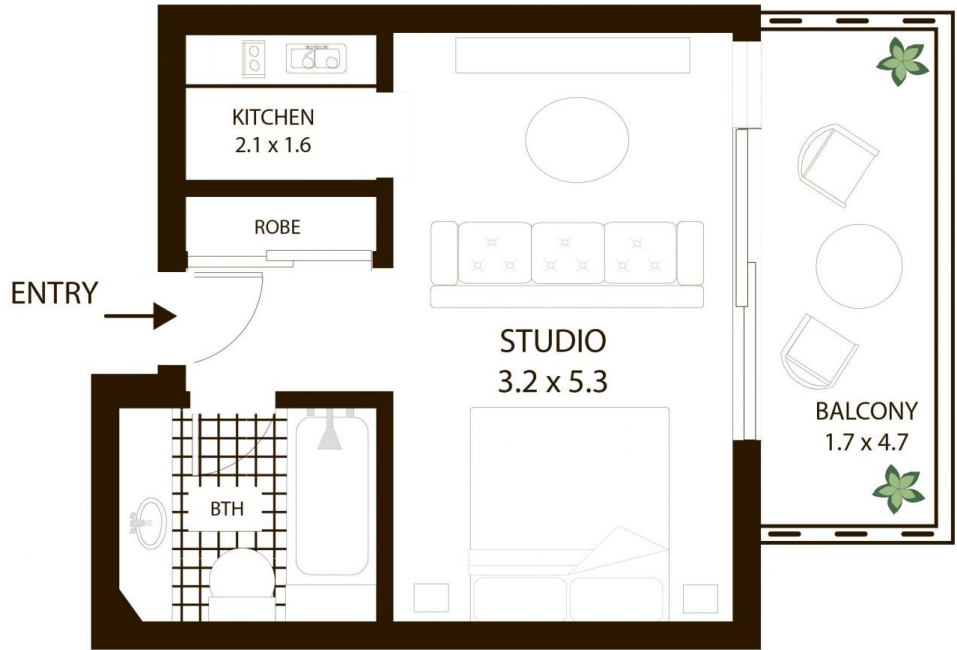
Phil Bell
02 9007 5300



Chris Bell
02 9007 5300

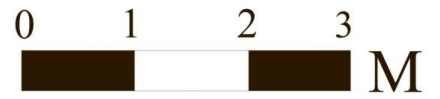


SINGLE
SECURE CAR SPACE



32/48 Alfred St Milsons Point

All measurements are approximate only. Plan is provided as an indication of layout



SCALE